

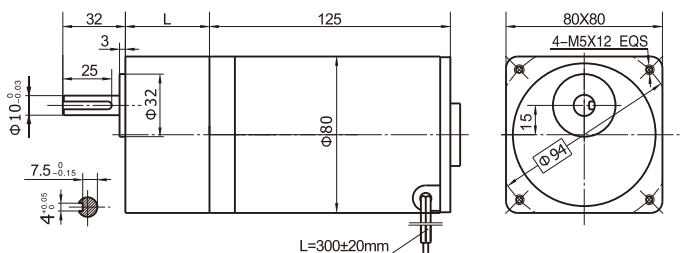
80JB100K/80ZY115

允许转矩范围: 10N.m
Permissible Load Range: 10N.m

● 产品特点和用途 Description of The Product

- 80mm的一体式齿轮减速器, 允许负载10.0N.m。合金结构钢齿轮, 全部滚动轴承的配置。
- 80mm integrated gearbox, with rated torque up to 10.0 N.m, alloy constructional steel gears, all equipped with ball bearings.

● 外形和安装尺寸 Dimensions



● 电动机主要技术参数 Motor Technical Data

电机型号 Type	额定电压 Rated voltage VDC	空载转速 No-load speed r/min	空载电流 No-load current A	额定转速 Rated speed r/min	额定转矩 Rated torque N.m	输出功率 Output power W	额定电流 Rated current A	堵转转矩 Stall torque N.m	堵转电流 Stall current A
80ZY115-2420	24	2000	0.3	1700	0.40	57	3.5	1.5	16
80ZY115-2430	24	3000	0.5	2600	0.44	120	7.5	2.0	33

● 齿轮减速电机主要技术参数 Gear Motor Technical Data

配置80ZY115-2420直流电机 (80ZY115-2420 DC Motor)

减速比 Reduction ratio	3	5	7.5	10	12.5	15	25	30	50
减速级数 Number of gear trains	2	2	2	2	2	2	3	3	3
减速器长度(L) Length(L) mm	32	32	32	32	32	32	43	43	43
空载转速 No-load speed r/min	667	400	267	200	160	133	80	67	40
额定转速 Rated speed r/min	567	340	227	170	136	113	68	57	34
额定转矩 Rated torque N.m	0.97	1.6	2.4	3.2	4.0	4.8	7.3	8.7	10
最大瞬间允许负载 Max. permissible load in a short time N.m	15	15	15	15	15	15	30	30	30
转向 Direction of rotation	CW	CW	CW	CW	CW	CW	CCW	CCW	CCW

配置80ZY115-2430直流电机 (80ZY115-2430 DC Motor)

减速比 Reduction ratio	3	5	7.5	10	12.5	15	25	30	50
减速级数 Number of gear trains	2	2	2	2	2	2	3	3	3
减速器长度(L) Length(L) mm	32	32	32	32	32	32	43	43	43
空载转速 No-load speed r/min	1000	600	400	300	240	200	120	100	60
额定转速 Rated speed r/min	800	520	347	260	208	173	104	87	52
额定转矩 Rated torque N.m	1.0	1.8	2.7	3.6	4.5	5.4	8.2	9.8	10
最大瞬间允许负载 Max. permissible load in a short time N.m	15	15	15	15	15	15	30	30	30
转向 Direction of rotation	CW	CW	CW	CW	CW	CW	CCW	CCW	CCW

● 电动机特性图 Motor Characteristic Figure

