

PM DC Spur Gear Motor

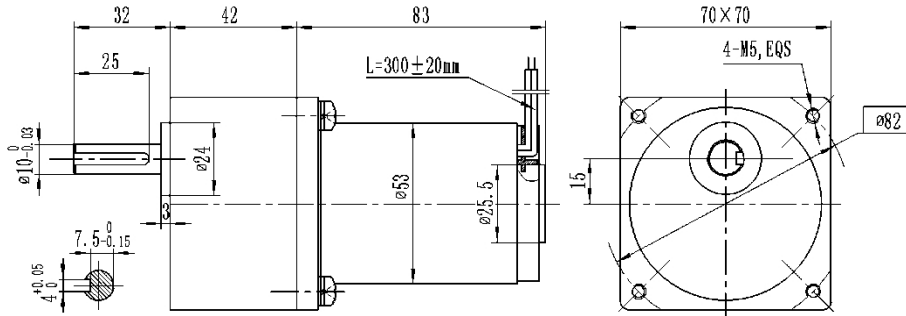
70JB80K/52ZY80

Permissible Load Range: 8.0N.m

Description of The Product

□70mm integrated gearbox, with rated torque up to 8.0 N.m, alloy constructional steel gears, all equipped with ball bearings

Dimensions



Motor Technical Data

电机型号 TYPE	额定电压 Rated voltage VDC	空载转速 No-load Speed r/min	空载电流 No-load current A	额定转速 Rated speed r/min	额定转矩 Rated torque mN.m	输出功率 Output power w	额定电流 Rated Current A	堵转力矩 Stall torque N.m	堵转电流 Stall current A
52ZY80-2430	24	3000	0.4	2550	75	15	1.5	0.35	6
52ZY80-2440	24	4000	0.6	3400	100	25	2.0	0.45	8

Gear Motor Technical Data

52ZY80-2430 DC Motor

减速比	Reduction ratio	75	90	100	120	150
减速级数	Number of gear trains	4	4	4	4	4
空载转速	No- load speed r/m n	40	33	30	25	20
额定转速	Rated speed r/min	34	28	25	21	17
额定转矩	Rated torque N.m	3.7	4.5	5	6	7.4
最大瞬间允许负载 Max. permissible load in a short time	N.m	16	16	16	16	16
转 向	Direction of rotation	CCW	CCW	CCW	CCW	CCW

52ZY80-2440 DC Motor

减速比	Reduction ratio	60	75	90	100	120
减速级数	Number of gear trains	4	4	4	4	4
空载转速	No- load speed r/m n	66	53	44	40	33
额定转速	Rated speed r/min	56	45	37	34	28
额定转矩	Rated torque N.m	4.0	5.0	6.0	6.6	8.0
最大瞬间允许负载 Max. permissible load in a short time	N.m	16	16	16	16	16
转 向	Direction of rotation	CCW	CCW	CCW	CCW	CCW

Motor Characteristic Figure

