

太阳能发电设备跟踪电机

Special Motor for Solar Trackers

● 产品说明 Product Description

太阳能发电设备的跟踪电机，也称为“追日系统控制电机”，特点是转速特别慢，一般为每分钟2~3转，正符合行星减速电机的特点。因为行星减速器可以把减速比做得非常大，所以获得低转速是轻而易举的事情。

本公司推荐以下直流行星电机、步进行星电机，能够满足大、中型自动跟踪系统的需要，能够抗御恶劣的天气条件，使用安全可靠。

Solar Tracker Motor Is Also Named Solar Tracking System Controlling Motor. The Motor Has Very Low Speed, Generally 2~3 Rpm Which Accords With The Feature Of Planetary Gear Motor. Because Reduction Ratio Of Planetary Gearbox Can Be Very Large To Achieve Very Low Speed.

The Following DC Planetary Gear Motors, Stepping Planetary Gear Motors Can Resist And Work Well In Bad Weather Conditions With Their Safe And Reliable Use And Meet The Demands Of Small And Medium Automatic Tracking Systems.



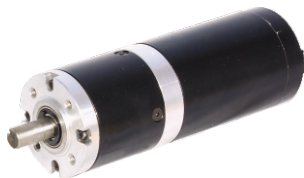
各种直流行星“追日系统控制电机”
Various Solar Tracker Motors



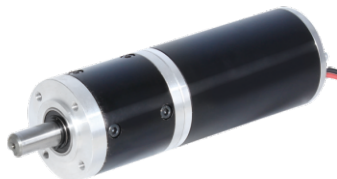
82JX1200K/80ZY115H直流行星减速电机
带霍尔传感器，防护等级为**IP55**
Model: 82JX1200K/80ZY115H
(DC Planetary Gear motor)
with hall sensor; IP55



92JX1500K/80ZY125H直流行星减速电机
带霍尔传感器，防护等级为**IP65**
Model: 92JX1500K/80ZY125H
(DC Planetary Gear motor)
with hall sensor; IP65



60JX300K/60ZY105直流行星减速电机
减速器直径60mm，输出转矩30N.m
Model: 60JX300K/60ZY105
(DC Planetary Gear Motor)
Gearbox OD: 60mm; Output Torque: 30N.m



52JX300K/52ZY95直流行星减速电机
减速器直径52mm，输出转矩30N.m
Model: 52JX300K/52ZY95
(DC Planetary Gear Motor)
Gearbox OD: 52mm; Output Torque: 30N.m



56JX300K/60ZY105BH直流行星减速电机
带霍尔传感器，防护等级为**IP65**
Model: 56JX300K/60ZY105BH
(DC Planetary Gear Motor)
With Hall Sensor; IP65



42JXT200K/42STH混合式步进行星减速电机
减速器直径42mm，输出转矩20N.m
Model: 42JXT200K/42STH
(Stepping Planetary Gear Motor)
Gearbox OD: 42mm; Output Torque: 20N.m



52JX300K/42STH混合式步进行星减速电机
减速器直径52mm，输出转矩30N.m
Model: 52JX300K/42STH
(Stepping Planetary Gear Motor)
Gearbox OD: 52mm; Output Torque: 30N.m



56JX300K/60ZY105B直流行星减速电机
减速器直径56mm，输出转矩30N.m
Model: 56JX300K/60ZY105B
(DC Planetary Gear Motor)
Gearbox OD: 56mm; Output Torque: 30N.m