

永磁直行星齿轮电机 (内齿圈材质: 金属和粉末金属)

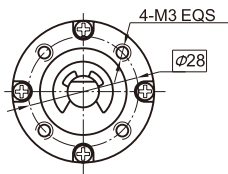
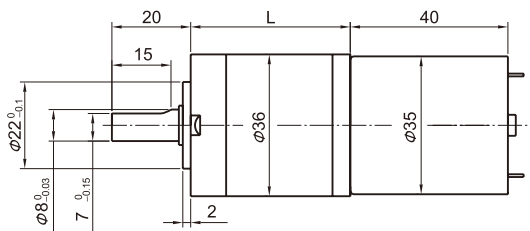
PM DC Planetary Gear Motor (Ring Gear Material: Metal and Powder Metal)

36JXE30K/35ZY40

Φ36 行星减速器, 允许转矩范围: 0.3N.m~3.0N.m
36mm OD Planetary Gearbox,
Permissible Load Range: 0.3N.m~3.0N.m

可在两种材料的内齿圈中进行选择: 粉末金属 (型号36JXF30K), 金属 (型号36JXE30K)
Ring gear can be selected within the two materials: Powder metal (Type:36JXF30K), Metal (Type:36JXE30K)

外形和安装尺寸 Dimensions



电动机主要技术参数 Motor Technical Data

电机型号 TYPE	额定电压 Rated voltage VDC	空载转速 No-load speed r/min	空载电流 No-load current mA	额定转速 Rated speed r/min	额定转矩 Rated torque mN.m	输出功率 Output power W	额定电流 Rated current mA	堵转力矩 Stall torque mN.m	堵转电流 Stall current A
35ZY40-1230	12	3000	90	2300	9	2.1	400	22	0.8
35ZY40-1250	12	5000	110	4300	8	3.5	600	34	2.2

齿轮减速电机主要技术参数 Gear Motor Technical Data

配置35ZY40-1230直流电机 (35ZY40-1230 DC Motor)

减速比 Reduction ratio	3.7	5.2	14	19	27	51	71	100	139	189	264	369	516	720
减速级数 Number of gear trains	1	1	2	2	2	3	3	3	3	4	4	4	4	4
减速器长度(L) Length(L) mm	26.5	26.5	33.6	33.6	33.6	40.5	40.5	40.5	40.5	47.4	47.4	47.4	47.4	47.4
空载转速 No-load speed r/min	809	579	214	158	111	59	42	30	22	16	11	8.1	5.8	4.2
额定转速 Rated speed r/min	620	444	164	121	85	45	32	23	17	12	8.7	6.2	4.5	3.2
额定转矩 Rated torque N.m	0.030	0.042	0.10	0.14	0.20	0.34	0.47	0.66	0.91	1.1	1.5	2.2	3	3
最大瞬间允许负载 Max. permissible load in a short time N.m	1.0	1.0	3.5	3.5	3.5	7.5	7.5	7.5	7.5	9	9	9	9	9

配置35ZY40-1250直流电机 (35ZY40-1250 DC Motor)

减速比 Reduction ratio	3.7	5.2	14	19	27	51	71	100	139	189	264	369	516	720
减速级数 Number of gear trains	1	1	2	2	2	3	3	3	3	4	4	4	4	4
减速器长度(L) Length(L) mm	26.5	26.5	33.6	33.6	33.6	40.5	40.5	40.5	40.5	47.4	47.4	47.4	47.4	47.4
空载转速 No-load speed r/min	1348	965	357	263	185	98	70	50	36	26	19	14	10	6.9
额定转速 Rated speed r/min	1159	830	307	226	159	84	61	43	31	23	16	12	8.3	6.0
额定转矩 Rated torque N.m	0.027	0.037	0.09	0.12	0.17	0.30	0.41	0.58	0.81	0.98	1.4	1.9	2.7	3
最大瞬间允许负载 Max. permissible load in a short time N.m	1.0	1.0	3.5	3.5	3.5	7.5	7.5	7.5	7.5	9	9	9	9	9

电动机特性图 Motor Characteristic Figure

