

## 永磁直行星齿轮电机 (内齿圈材质: 金属和粉末金属)

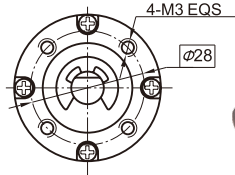
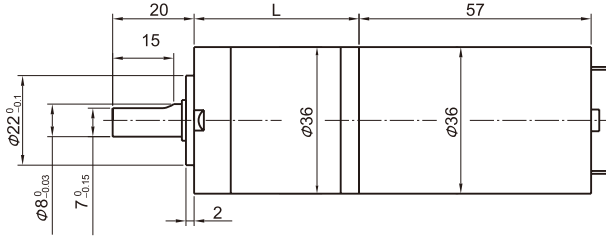
PM DC Planetary Gear Motor (Ring Gear Material: Metal and Powder Metal)

# 36JXE30K/36ZY57

Φ36 行星减速器, 允许转矩范围: 0.3N.m~3.0N.m  
36mm OD Planetary Gearbox,  
Permissible Load Range: 0.3N.m~3.0N.m

可在两种材料的内齿圈中进行选择: 粉末金属 (型号36JXF30K), 金属 (型号36JXE30K)  
Ring gear can be selected within the two materials: Powder metal (Type:36JXF30K), Metal (Type:36JXE30K)

### 外形和安装尺寸 Dimensions



### 电动机主要技术参数 Motor Technical Data

电机型号 TYPE	额定电压 Rated voltage VDC	空载转速 No-load speed r/min	空载电流 No-load current mA	额定转速 Rated speed r/min	额定转矩 Rated torque mN.m	输出功率 Output power W	额定电流 Rated current A	堵转力矩 Stall torque mN.m	堵转电流 Stall current A
36ZY57-2433	24	3300	90	2700	24.5	6	0.50	130	1.9
36ZY57-2442	24	4200	120	3600	19	7	0.52	125	2.8

可以制造12VDC的产品, 转速、转矩指标与24VDC基本一致。12V DC Optional, speed and torque is the same as 24V DC's.

### 齿轮减速电机主要技术参数 Gear Motor Technical Data

配置36ZY57-2433直流电机 (36ZY57-2433 DC Motor)

减速比 Reduction ratio	3.7	5.2	14	19	27	51	71	100	139	181	219
减速级数 Number of gear trains	1	1	2	2	2	3	3	3	3	4	4
减速器长度(L) Length(L) mm	26.5	26.5	33.6	33.6	33.6	40.5	40.5	40.5	40.5	47.4	47.4
空载转速 No-load speed r/min	892	635	236	174	122	65	46	33	24	18	15
额定转速 Rated speed r/min	730	519	193	142	100	53	38	27	19	15	12
额定转矩 Rated torque N.m	0.081	0.11	0.28	0.38	0.54	0.91	1.2	1.8	2.5	3	3
最大瞬间允许负载 Max. permissible load in a short time N.m	1.0	1.0	3.5	3.5	3.5	7.5	7.5	7.5	7.5	9	9

配置36ZY57-2442直流电机 (36ZY57-2442 DC Motor)

减速比 Reduction ratio	3.7	5.2	14	19	27	51	71	100	139	181	219	254	306	354
减速级数 Number of gear trains	1	1	2	2	2	3	3	3	3	4	4	4	4	4
减速器长度(L) Length(L) mm	26.5	26.5	33.6	33.6	33.6	40.5	40.5	40.5	40.5	47.4	47.4	47.4	47.4	47.4
空载转速 No-load speed r/min	1132	811	300	221	156	82	59	42	30	22	19	17	14	12
额定转速 Rated speed r/min	970	695	257	189	133	71	51	36	26	19	16	14	12	10
额定转矩 Rated torque N.m	0.063	0.089	0.22	0.29	0.42	0.71	0.98	1.4	1.9	2.3	2.7	3	3	3
最大瞬间允许负载 Max. permissible load in a short time N.m	1.0	1.0	3.5	3.5	3.5	7.5	7.5	7.5	7.5	9	9	9	9	9

### 电动机特性图 Motor Characteristic Figure

